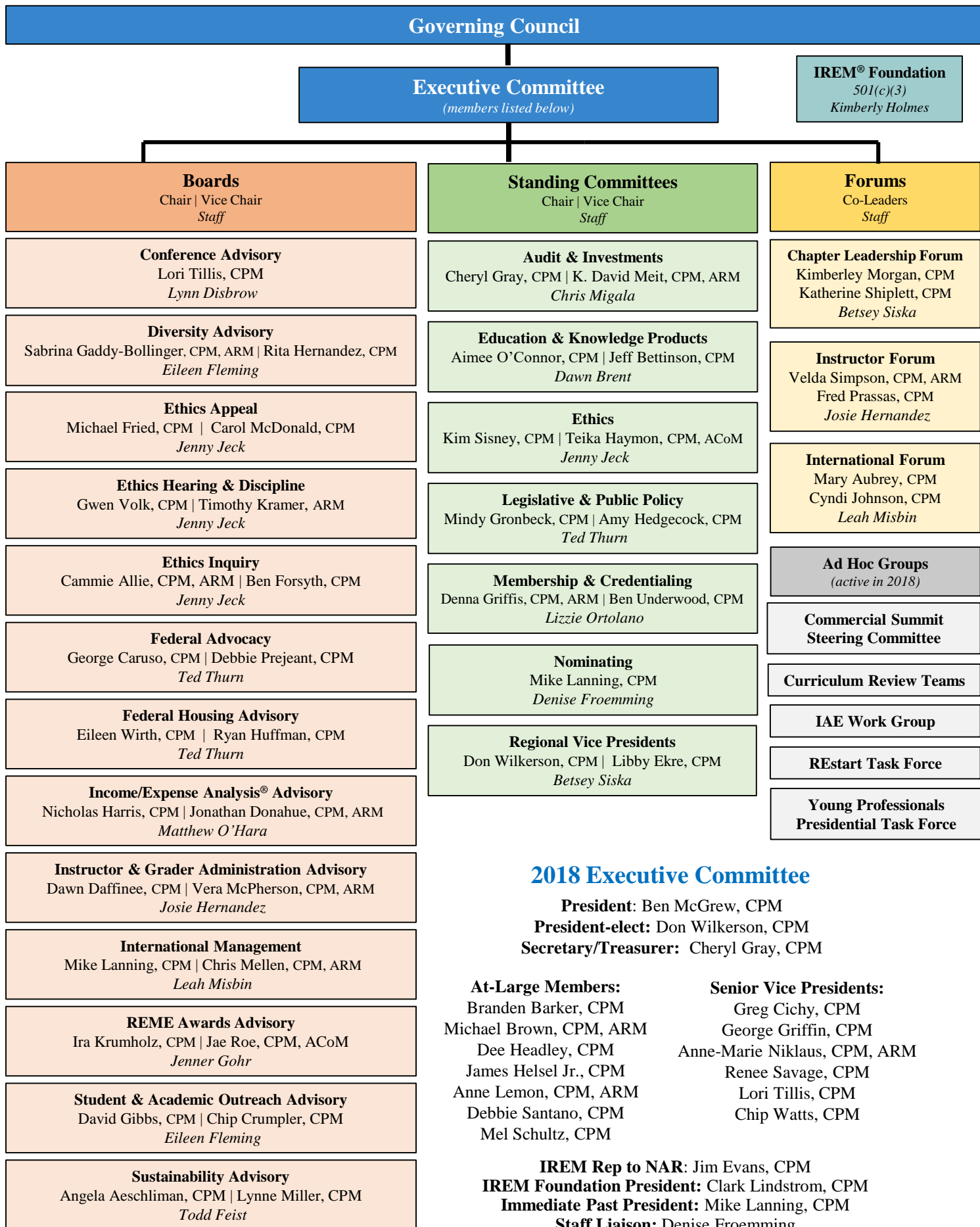


IREM® Volunteer Organization Chart - 2018



2018 Executive Committee

President: Ben McGrew, CPM
President-elect: Don Wilkerson, CPM
Secretary/Treasurer: Cheryl Gray, CPM

At-Large Members:	Senior Vice Presidents:
Branden Barker, CPM	Greg Cichy, CPM
Michael Brown, CPM, ARM	George Griffin, CPM
Dee Headley, CPM	Anne-Marie Niklaus, CPM, ARM
James Helsel Jr., CPM	Renee Savage, CPM
Anne Lemon, CPM, ARM	Lori Tillis, CPM
Debbie Santano, CPM	Chip Watts, CPM
Mel Schultz, CPM	

IREM Rep to NAR: Jim Evans, CPM
IREM Foundation President: Clark Lindstrom, CPM
Immediate Past President: Mike Lanning, CPM
Staff Liaison: Denise Froemming