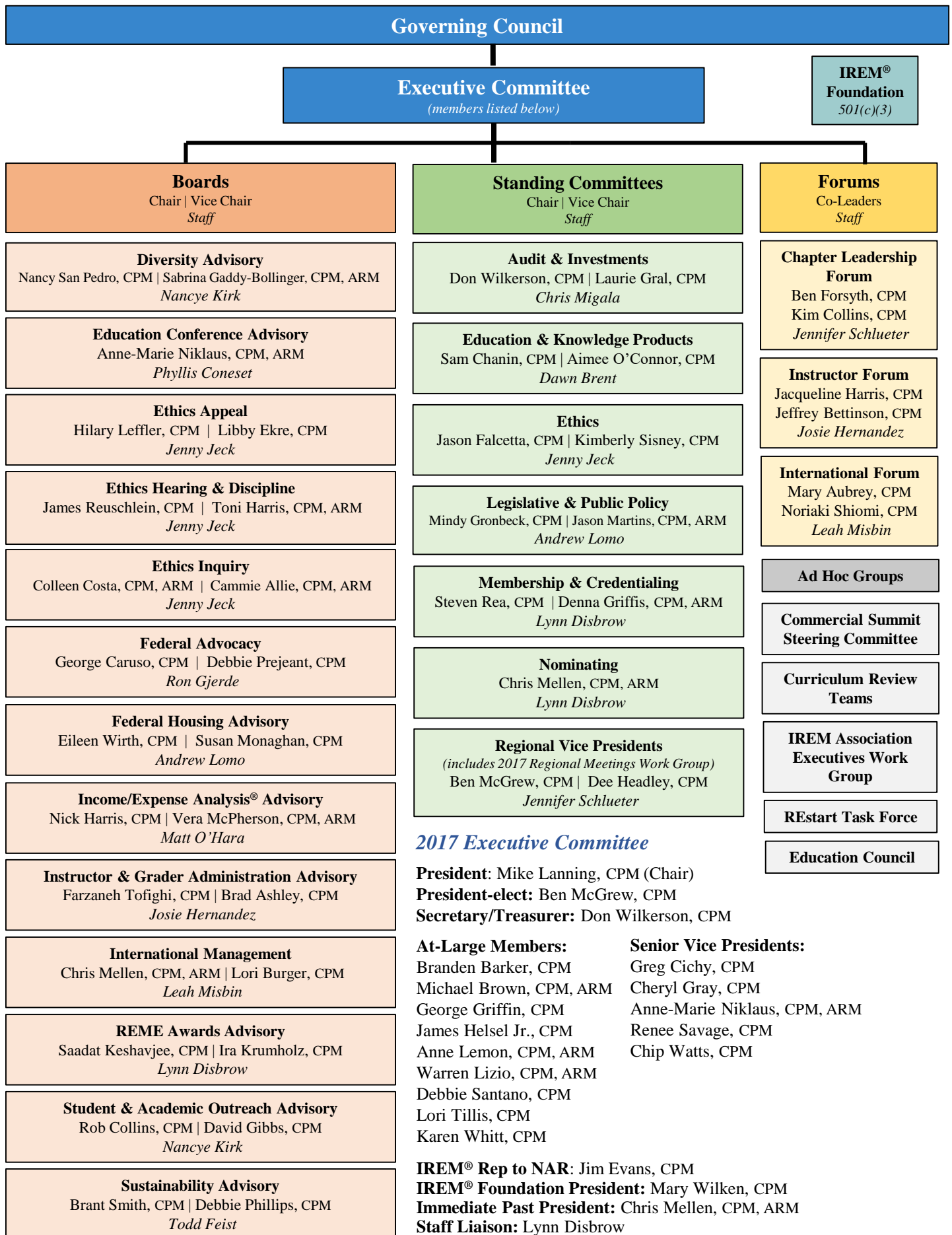


IREM® Volunteer Organization Chart - 2017



2017 Executive Committee

President: Mike Lanning, CPM (Chair)
President-elect: Ben McGrew, CPM
Secretary/Treasurer: Don Wilkerson, CPM

At-Large Members:	Senior Vice Presidents:
Branden Barker, CPM	Greg Cichy, CPM
Michael Brown, CPM, ARM	Cheryl Gray, CPM
George Griffin, CPM	Anne-Marie Niklaus, CPM, ARM
James Helsel Jr., CPM	Renee Savage, CPM
Anne Lemon, CPM, ARM	Chip Watts, CPM
Warren Lizio, CPM, ARM	
Debbie Santano, CPM	
Lori Tillis, CPM	
Karen Whitt, CPM	

IREM® Rep to NAR: Jim Evans, CPM
IREM® Foundation President: Mary Wilken, CPM
Immediate Past President: Chris Mellen, CPM, ARM
Staff Liaison: Lynn Disbrow